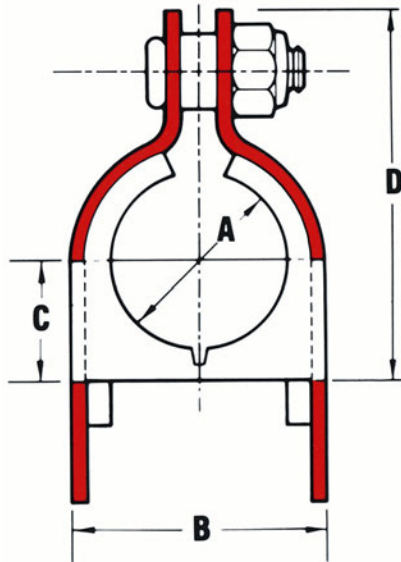
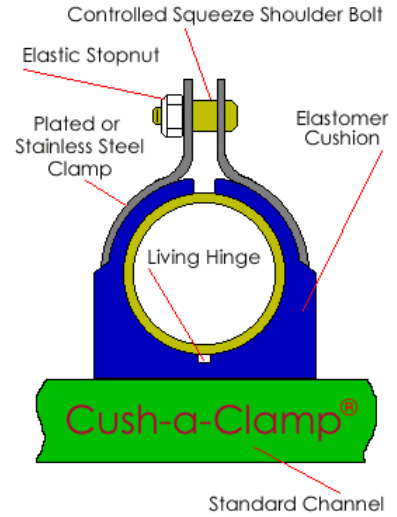




Protects against the effects of vibration, shock and surge.

Suits all 41mm wide Unistrut Channel



| TUBE SERIES          |                                 |                         | PIPE SERIES          |                   | Dim. "A" (mm) | Dim. "B" (mm) | Dim. "C" (mm) | Dim. "D" (mm) |
|----------------------|---------------------------------|-------------------------|----------------------|-------------------|---------------|---------------|---------------|---------------|
| Assembly Part Number | Copper and Steel Tube O.D. Size | Copper Water Pipe (Nom) | Assembly Part Number | Nominal Pipe Size |               |               |               |               |
| 004T008              | 1/4"                            |                         |                      |                   | 6.4           | 15.7          | 6.7           | 24.9          |
| 006T010              | 3/8"                            | 1/4"                    |                      |                   | 9.4           | 20.8          | 8.4           | 28.7          |
| 008T012              | 1/2"                            | 3/8"                    |                      |                   | 12.7          | 23.9          | 10.2          | 34.0          |
| 010T014              | 5/8"                            | 1/2"                    | 009N012              | 1/4"              | 13.7          | 24.9          | 10.9          | 34.0          |
| 012T016              | 3/4"                            | 5/8"                    | 011N014              | 3/8"              | 15.7          | 26.9          | 11.7          | 39.1          |
| 014T018              | 7/8"                            | 3/4"                    | 014N018              | 1/2"              | 17.0          | 28.7          | 12.5          | 39.1          |
| 016T020              | 1"                              |                         | 014N018              | 1/2"              | 21.3          | 32.8          | 14.7          | 46.2          |
| 018T022              | 1-1/8"                          | 1"                      | 017N022              | 3/4"              | 22.1          | 33.3          | 14.7          | 46.2          |
| 020T024              | 1-1/4"                          |                         | 017N022              | 3/4"              | 25.4          | 36.6          | 16.5          | 49.5          |
| 022T026              | 1-3/8"                          | 1-1/4"                  | 021N026              | 1"                | 26.7          | 38.1          | 17.8          | 49.5          |
| 024N028              | 1-1/2"                          |                         | 021N026              | 1"                | 28.4          | 39.9          | 17.8          | 52.8          |
| 026N030              | 1-5/8"                          | 1-1/2"                  | 027N032              | 1-1/4"            | 31.8          | 43.2          | 19.6          | 56.1          |
| 028N032              | 1-3/4"                          |                         | 027N032              | 1-1/4"            | 33.3          | 44.7          | 20.6          | 59.4          |
| 030N034              | 1-7/8"                          |                         | 030N034              | 1-1/2"            | 34.8          | 46.2          | 21.1          | 59.4          |
| 032N036              | 2"                              |                         | 030N034              | 1-1/2"            | 38.4          | 49.5          | 22.9          | 62.7          |
| 034N040              | 2-1/8"                          | 2"                      | 038N044              | 2"                | 41.1          | 52.6          | 24.4          | 66.0          |
| 038N044              | 2-3/8"                          |                         | 038N044              | 2"                | 42.2          | 55.1          | 25.2          | 69.3          |
| 040N046              | 2-1/2"                          |                         | 046N052              | 2-1/2"            | 44.5          | 55.9          | 25.9          | 69.3          |
| 042N048              | 2-5/8"                          | 2-1/2"                  | 046N052              | 2-1/2"            | 47.5          | 58.9          | 27.7          | 72.6          |
| 046N052              | 2-7/8"                          |                         | 046N052              | 2-1/2"            | 48.5          | 59.7          | 27.7          | 72.6          |
| 050N054              | 3"                              |                         | 056N062              | 3"                | 50.8          | 62.2          | 29.2          | 77.2          |
| 050N056              | 3-1/8"                          | 3"                      | 056N062              | 3"                | 53.8          | 65.3          | 32.3          | 82.0          |
| 053N060              | 3-5/16"                         |                         | 064N072              | 3-1/2"            | 60.2          | 71.6          | 35.8          | 93.2          |
| 056N062              | 3-1/2"                          |                         | 064N072              | 3-1/2"            | 63.5          | 74.7          | 37.1          | 96.3          |
| 058N064              | 3-5/8"                          | 3-1/2"                  | 069N076              | 4"                | 66.5          | 78.0          | 38.9          | 99.6          |
| 064N072              | 4"                              |                         | 072N080              | 4"                | 72.9          | 84.3          | 42.2          | 105.9         |
| 066N074              | 4-1/8"                          | 4"                      | 072N080              | 4"                | 76.2          | 90.7          | 45.2          | 112.3         |
| 069N076              | 4-5/16"                         |                         | 082N090              | 5"                | 79.2          | 90.7          | 45.2          | 112.3         |
| 072N080              | 4-1/2"                          |                         | 089N096              | 5"                | 84.1          | 100.6         | 48.3          | 120.7         |
| 082N090              | 5-1/8"                          | 5"                      | 106N114              | 6"                | 88.9          | 100.3         | 50.1          | 121.7         |
| 098N106              | 6-1/8"                          | 6"                      | 106N114              | 6"                | 91.9          | 106.7         | 51.6          | 126.7         |
|                      |                                 |                         |                      |                   | 101.6         | 113.0         | 57.9          | 137.7         |
|                      |                                 |                         |                      |                   | 104.6         | 116.1         | 59.4          | 140.7         |
|                      |                                 |                         |                      |                   | 110.3         | 126.0         | 61.0          | 148.3         |
|                      |                                 |                         |                      |                   | 114.3         | 125.3         | 64.3          | 150.4         |
|                      |                                 |                         |                      |                   | 130.0         | 141.5         | 72.1          | 166.1         |
|                      |                                 |                         |                      |                   | 141.2         | 152.7         | 77.7          | 175.8         |
|                      |                                 |                         |                      |                   | 155.4         | 166.9         | 84.8          | 191.5         |
|                      |                                 |                         |                      |                   | 168.1         | 179.6         | 91.2          | 209.0         |

WEB (M&E) Products Ltd

HILLAM ROAD IND ESTATE, BRADFORD, BD2 1QN

TEL: 01274 743177 FAX 01274 743188 E-MAIL: stuart@web-ltd.co.uk



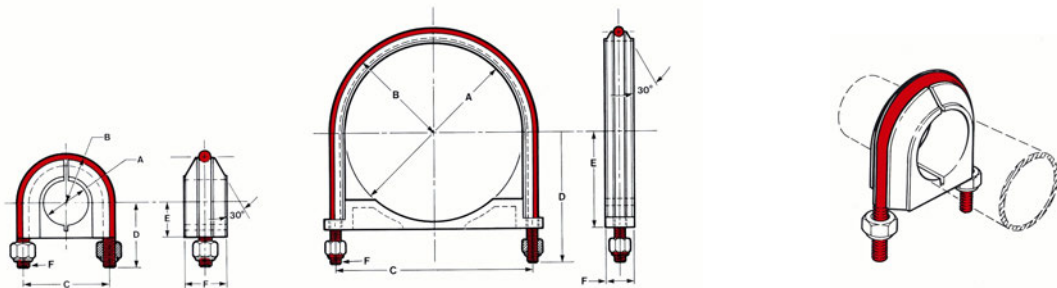
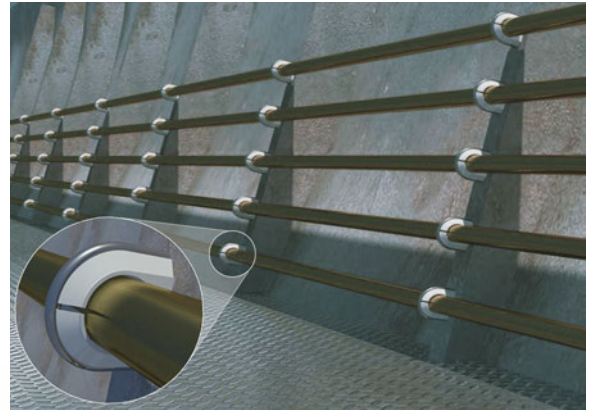


**MATERIALS :-**

**U-BOLTS - Mild Steel or Stainless Steel 316**

**Black Cushion - Thermoplastic Elastomer**

**White Cushion - Flame Retardant Thermoplastic Elastomer**



| Assembly Part Number | Nominal Pipe Size | A Dia. | B Rad. | C     | D     | E     | F   |
|----------------------|-------------------|--------|--------|-------|-------|-------|-----|
| UB1/2PA              | 1/2"              | 21.3   | 20.3   | 40.6  | 38.1  | 17.0  | M6  |
| UB3/4PA              | 3/4"              | 26.7   | 22.9   | 45.7  | 40.6  | 19.8  | M6  |
| UB1PA                | 1"                | 33.3   | 25.9   | 52.1  | 43.2  | 23.1  | M6  |
| UB1-1/4PA            | 1-1/4"            | 42.2   | 32.3   | 64.8  | 53.3  | 27.4  | M10 |
| UB1-1/2PA            | 1-1/2"            | 48.3   | 35.6   | 71.1  | 55.9  | 30.2  | M10 |
| UB2PA                | 2"                | 60.2   | 42.4   | 85.1  | 63.5  | 36.8  | M10 |
| UB2-1/2PA            | 2-1/2"            | 72.9   | 49.5   | 99.1  | 76.2  | 42.9  | M12 |
| UB3PA                | 3"                | 88.9   | 57.7   | 115.6 | 83.8  | 50.8  | M12 |
| UB3-1/2PA            | 3-1/2"            | 101.6  | 64.0   | 128.3 | 94.0  | 57.2  | M12 |
| UB4PA                | 4"                | 114.3  | 69.9   | 139.7 | 99.1  | 63.5  | M12 |
| UB5PA                | 5"                | 141.2  | 82.6   | 166.6 | 114.3 | 77.0  | M12 |
| UB6PA                | 6"                | 168.2  | 98.3   | 196.9 | 137.2 | 90.4  | M16 |
| UB8PA                | 8"                | 219.0  | 123.2  | 249.4 | 162.6 | 115.8 | M16 |
| UB10PA               | 10"               | 273.1  | 154.4  | 308.9 | 195.6 | 144.3 | M20 |
| UB12PA               | 12"               | 323.9  | 181.1  | 362.0 | 221.0 | 169.7 | M20 |

WEB (M&E) Products Ltd

HILLAN ROAD IND ESTATE, BRADFORD, WEST YORKSHIRE ,BD2

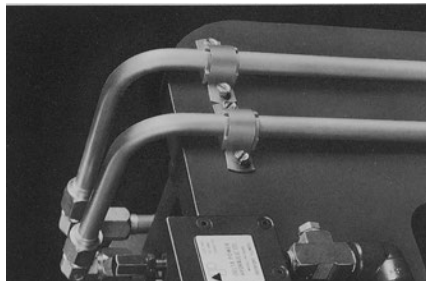
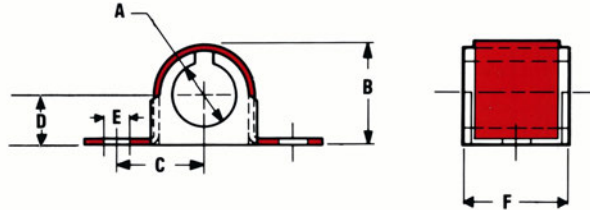
TEL: 01274 734177 FAX 01274 743188 E-MAIL: stuart@web-ltd.co.uk





## OMEGA SERIES

## CUSHION CLAMPING SYSTEMS



| Assembly Part Number | Copper and Steel Tubing O.D. | Copper Water Pipe (Nom) | Nominal Pipe Size | Dim. "A" mm | Dim. "B" mm | Dim. "C" mm | Dim. "D" mm | Dim. "E" mm | Dim. "F" mm |
|----------------------|------------------------------|-------------------------|-------------------|-------------|-------------|-------------|-------------|-------------|-------------|
| 004M007              | 1/4"                         |                         |                   | 6.4         | 12.2        | 15.2        | 5.6         | 6.6         | 19.8        |
| 006M008              | 3/8"                         | 1/4"                    |                   | 9.4         | 15.8        | 16.8        | 7.9         | 6.6         | 20.6        |
| 008M011              | 1/2"                         | 3/8"                    | 1/4"              | 12.7        | 20.6        | 21.1        | 10.2        | 6.6         | 24.9        |
| 010M013              | 5/8"                         | 1/2"                    | 3/8"              | 15.8        | 23.6        | 21.6        | 11.7        | 6.6         | 24.9        |
| 012M015              | 3/4"                         | 5/8"                    |                   | 19.1        | 25.9        | 22.9        | 12.7        | 6.6         | 24.9        |
| 014M017              | 7/8"                         | 3/4"                    | 1/2"              | 22.1        | 28.5        | 26.2        | 13.5        | 6.6         | 24.9        |
| 016M019              | 1"                           |                         |                   | 25.4        | 31.5        | 26.4        | 15.0        | 6.6         | 24.9        |
| 018M020              |                              |                         | 3/4"              | 26.7        | 35.6        | 28.2        | 17.8        | 6.6         | 24.9        |
| 018M021              | 1-1/8"                       | 1"                      |                   | 28.5        | 35.6        | 29.7        | 17.8        | 6.6         | 24.9        |
| 020M024              | 1-1/4"                       |                         |                   | 31.8        | 40.6        | 30.5        | 19.6        | 6.6         | 39.6        |
| 021M026              |                              |                         | 1"                | 33.3        | 43.4        | 32.5        | 20.6        | 6.6         | 39.6        |
| 022M026              | 1-3/8"                       | 1-1/4"                  |                   | 34.8        | 43.4        | 32.5        | 21.1        | 6.6         | 39.6        |
| 024M028              | 1-1/2"                       |                         |                   | 38.1        | 47.0        | 34.5        | 22.9        | 6.6         | 39.6        |
| 026M030              | 1-5/8"                       | 1-1/2"                  |                   | 41.2        | 50.3        | 36.3        | 24.4        | 6.6         | 39.6        |
| 027M032              |                              |                         | 1-1/4"            | 42.2        | 53.9        | 39.4        | 25.2        | 8.6         | 39.6        |
| 028M032              | 1-3/4"                       |                         |                   | 44.5        | 53.9        | 39.4        | 25.9        | 8.6         | 39.6        |
| 030M034              | 1-7/8"                       |                         | 1-1/2"            | 47.5        | 57.2        | 41.7        | 27.7        | 8.6         | 39.6        |
| 032M036              | 2"                           |                         |                   | 50.8        | 60.5        | 42.9        | 29.2        | 8.6         | 39.6        |
| 034M040              | 2-1/8"                       |                         |                   | 53.9        | 66.6        | 47.2        | 32.3        | 8.6         | 39.6        |
| 038M044              | 2-3/8"                       |                         | 2"                | 60.2        | 73.2        | 49.3        | 35.8        | 8.6         | 39.6        |
| 042M048              | 2-5/8"                       | 2-1/2"                  |                   | 66.6        | 79.5        | 52.6        | 38.9        | 8.6         | 39.6        |
| 046M052              | 2-7/8"                       |                         | 2-1/2"            | 72.9        | 85.9        | 55.6        | 41.9        | 8.6         | 39.6        |
| 050M056              | 3-1/8"                       | 3"                      |                   | 79.3        | 93.5        | 58.9        | 45.2        | 8.6         | 39.6        |
| 056M062              | 3-1/2"                       |                         | 3"                | 88.9        | 103.1       | 63.5        | 50.0        | 8.6         | 39.6        |
| 058M064              | 3-5/8"                       | 3-1/2"                  |                   | 92.0        | 106.4       | 65.3        | 51.6        | 8.6         | 39.6        |
| 064M072              | 4"                           |                         | 3-1/2"            | 101.6       | 118.9       | 71.6        | 57.9        | 8.6         | 39.6        |
| 066M074              | 4-1/8"                       | 4"                      |                   | 104.7       | 122.9       | 77.5        | 59.4        | 10.9        | 39.6        |
| 072M080              | 4-1/2"                       |                         | 4"                | 114.3       | 132.6       | 82.3        | 64.3        | 10.9        | 39.6        |
| 082M090              | 5-1/8"                       |                         | 5"                | 130.1       | 147.8       | 90.2        | 72.1        | 10.9        | 39.6        |
| 089M096              |                              |                         | 5"                | 141.2       | 160.3       | 101.6       | 77.7        | 14.2        | 39.6        |
| 098M106              | 6-1/8"                       | 6"                      |                   | 155.5       | 175.3       | 109.5       | 84.8        | 14.2        | 39.6        |
| 106M114              |                              |                         | 6"                | 168.2       | 187.7       | 115.8       | 90.9        | 14.2        | 39.6        |

WEB (M&E) Products Ltd

HILLAM ROAD IND ESTATE, BRADFORD, WEST YORKSHIRE ,BD2

TEL: 01274 743177 FAX 01274 743188 E-MAIL: stuart@web-ltd.co.uk

